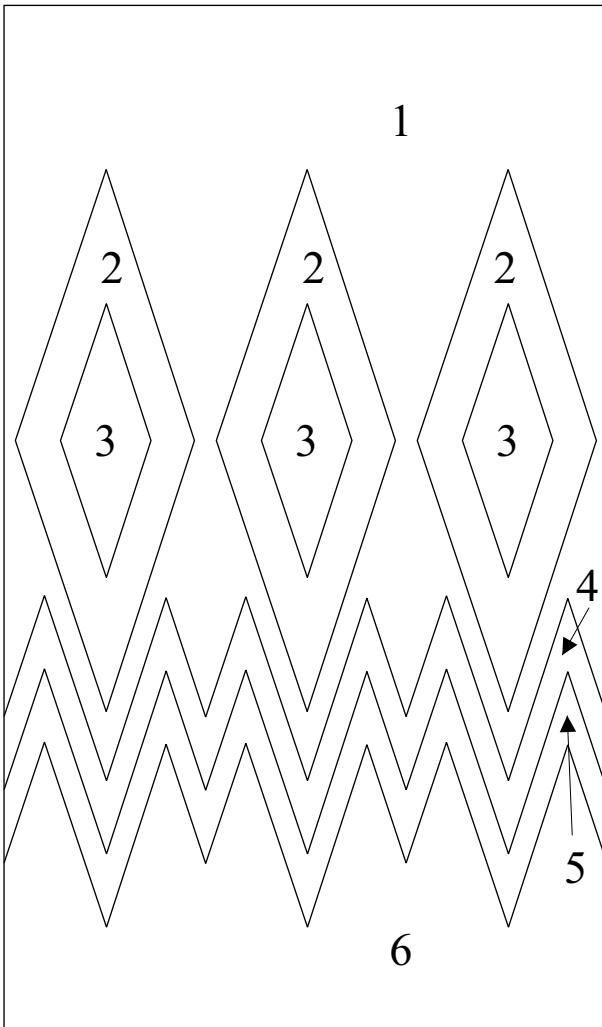


# Assembly Instructions for the Pool Cue Pen Inlay Kit (Design C)

## (PSI Pool Cue Pen Kit)

We're going to start by making sure all pieces are included and none are broken. If there are any missing or broken pieces, call or e-mail Ken at (702) 523-9236 or [kallenshaan@cox.net](mailto:kallenshaan@cox.net) to get replacements. Even if you didn't purchase your inlay kit directly from Kallenshaan Woods, use this contact info as our vendors don't carry replacement parts. Also, if a piece doesn't seem to fit well, use this contact info for a replacement or solution. Don't glue in a piece if it doesn't look right.

There is a total of 13 pieces in the upper barrel inlay part of this kit. Insert the brass tube from your PSI Pool Cue Pen Kit into the large Cocobolo section (Piece #1). Don't glue at this time. This will help align the pieces as they are positioned in the blank. Slide the holly ring piece (#4) into position. Rotate this piece to try all positions for the best fit. Do the same for the black ring (#5) and the Curly Maple bottom piece. Position the 3 Holly triangles (#2) followed by the 3 Sapphire blue triangles (#3) securing these with the supplied elastic bands. Once all pieces are in place



carefully remove the brass tube and while tightly pressing the blank together with the thumb and forefinger of your left hand, brush thin CA glue on all of the seams using a disposable artists paint brush. Don't worry about the elastic bands as they can be removed later while turning.

Drill out the lower barrel curly maple blank using an 8mm drill bit.

Now we'll glue the brass tubes into the blanks. Check the fit of the tubes as you might have to sand the inside of the blanks for a good fit. If you do, wrap a small dowel with 100G sandpaper and sand the inside of the barrels until the tubes fits smoothly. Use 2-part epoxy to glue in the brass tubes. Once the glue has cured sand the ends flush with the brass tube using a belt or disc sander. Don't use a barrel trimmer for this. Now you can mount the blanks on the lathe for final turning and finishing. Apply whatever finish you're comfortable with as they all work well with these inlay kits.

